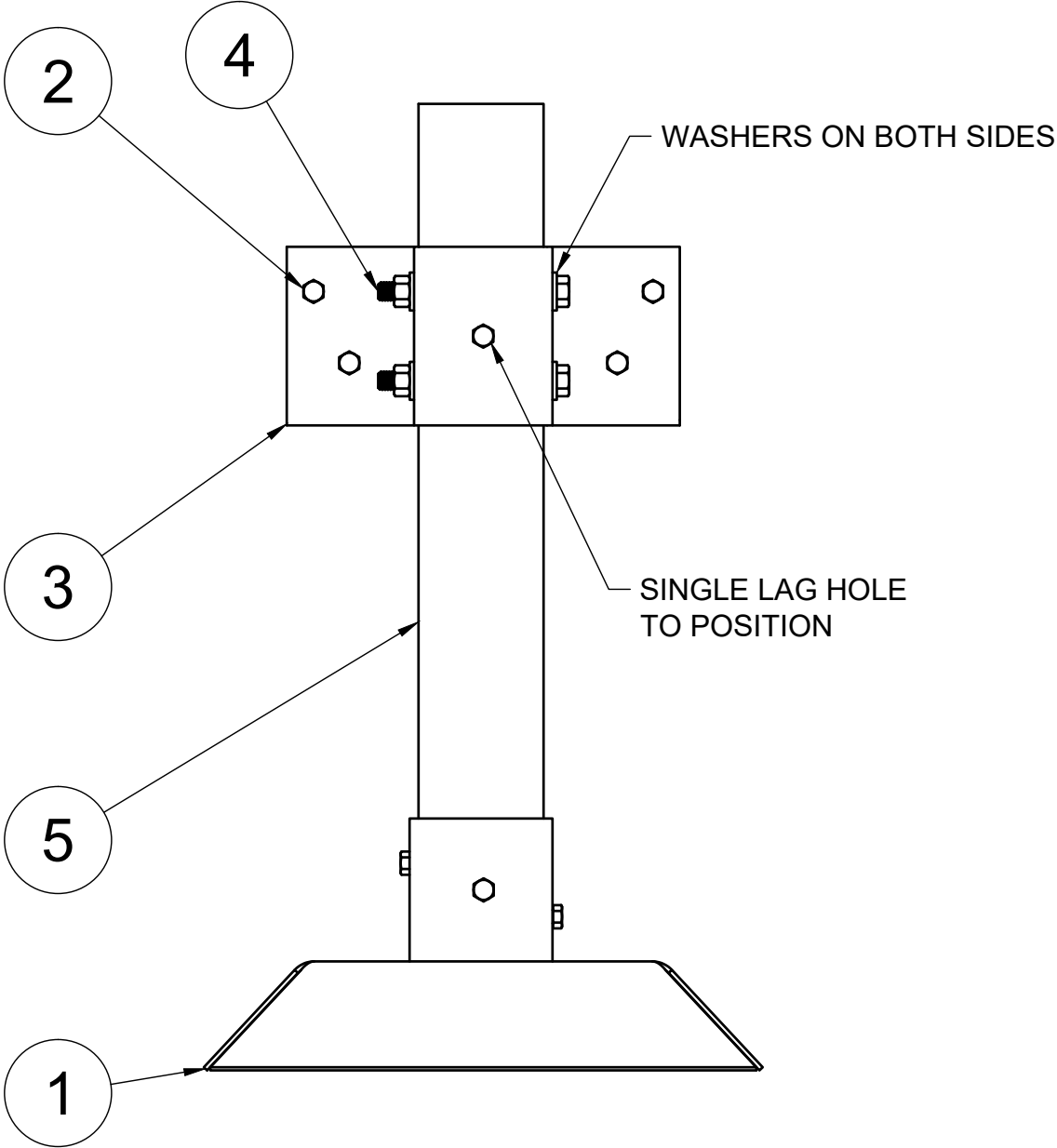
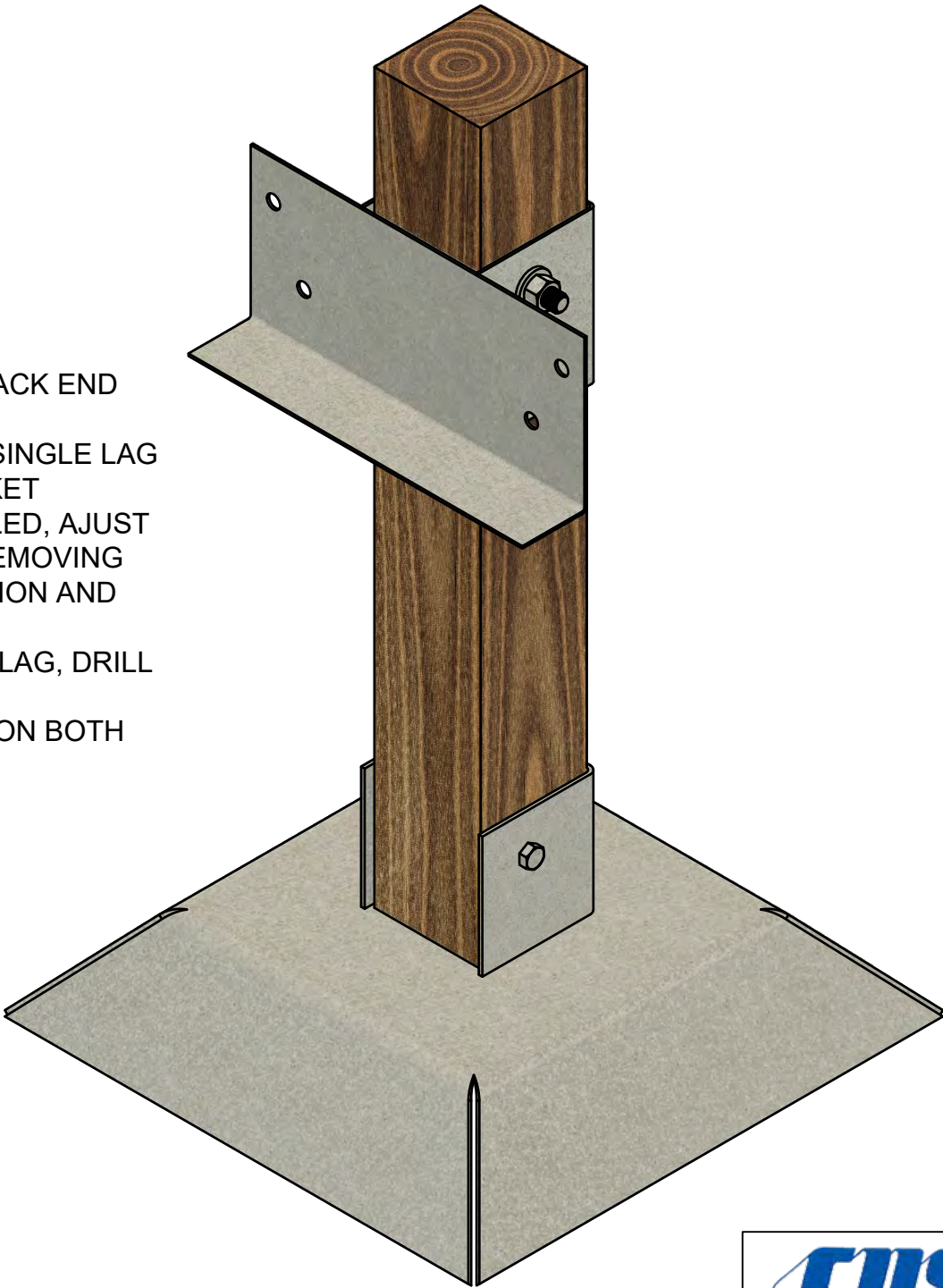



BOLT THROUGH BRACKET ASSEMBLY

- 1. SECURE THE PAN TO THE POST, BLACK END DOWN WITH 3 LAG BOLTS
- 2. INSTALL UPPER BRACKET USING A SINGLE LAG SCREW IN THE BACK OF THE BRACKET
- 3. ONCE BOARDWALK FULLY ASSEMBLED, AJUST BOARDWAL TO FINAL HEIGHT BY REMOVING THE SIGNLE LAG, ADJUSTING POSITION AND REINSTALLING
- 4. ONCE IN FINAL LOCATION, HELD BY LAG, DRILL TWO 7/16" HOLES THROUGH POST
- 5. INSTALL THE BOLT WITH WASHERS ON BOTH SIDES, TIGHTEN



5	1	POST
4	2	HW.HHCS.GALV.1/2X5.WASHERS.NUT
3	1	TF-4-STRT4
2	8	HW.LAG.GALV.3/8X2.5
1	1	BW.PAN.STD.4X4
ITEM	QTY	PART NUMBER
PARTS LIST		

	PROJECT Custom Boardwalks			
	TITLE PAN + BOLT THROUGH BRACKET WITH HARDWARE			
APPROVED	SIZE B	CODE	DWG NO	REV
CHECKED			BW.BRKT.BOLT.STRAIGHT.4X4	
DRAWN	Custom Manufacturing 8/3/2022	SCALE 1:4	WEIGHT	SHEET 3/3