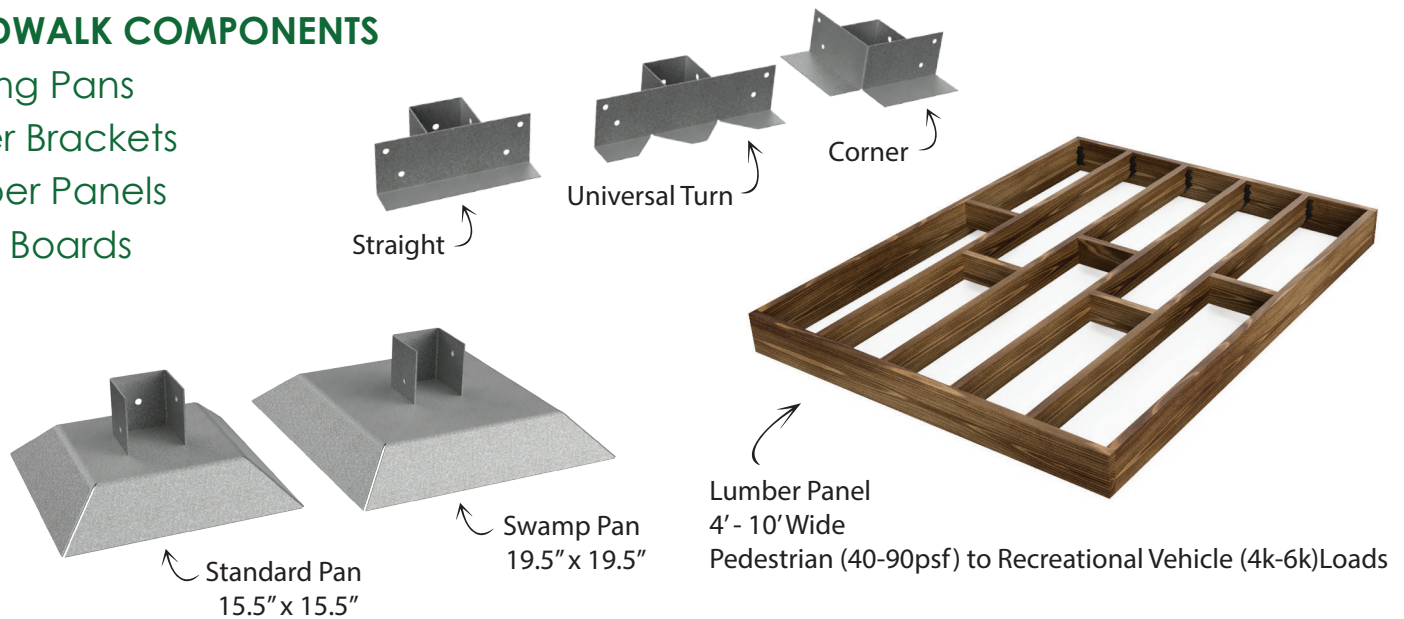


## BOARDWALK COMPONENTS

Footing Pans  
Upper Brackets  
Lumber Panels  
Deck Boards  
Rail



## DECK BOARD OPTIONS

5/4 x 6 Brown Stained Treated Decking  
2x6 - 2x10 Brown Stained Treated Decking  
Composite Decking

## RAIL OPTIONS

2X4 Curb Rail (Elevation less than 30")  
42" Horizontal Rail  
42" Vertical Rail  
Other/Custom

## BOARDWALK DESIGN FEATURES

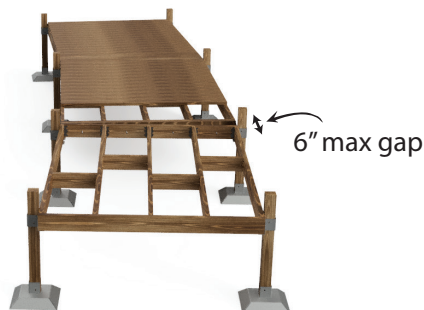
### Straight

1 panel & 2 pans w/  
straight brkts per 8'



### Curve

1 panel & 2 pans w/  
U-Turn brkts per 8'



### Turn

1 pie panel & 1 pan w/  
u-turn brkt per turn



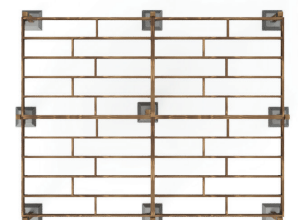
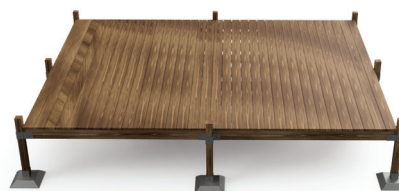
### Bump Out

Added panels alongside a boardwalk



### Platform

Added panels to end or middle of boardwalk  
to provide a large area



# Typical Boardwalk Details

### NOTES

#### DESIGN CRITERIA

1. THE PEDESTRIAN BOARDWALK IS DESIGNED IN ACCORDANCE WITH THE 2015 INTERNATIONAL BUILDING CODE & ASCE 7-10 AND THE LOAD COMBINATIONS PRESCRIBED WITHIN FOR ALLOWABLE STRESS DESIGN, WITH THE FOLLOWING:

DESIGN LOADS:	
DEAD LOAD	= 12 PSF
PEDESTRIAN LOAD	= 60 PSF
GROUND SNOW LOAD	= 60 PSF
WIND LOAD	= 107 MPH
VEHICLE LOAD	= N/A

MATERIAL STRESSES:	
WOOD DECKING	= SYP #1
WOOD JOISTS	= SYP#1
WOOD CURB RAILS	= SYP#1

#### GENERAL CONSTRUCTION

1. THE ENGINEER IS NOT RESPONSIBLE FOR THE CONSTRUCTION MEANS AND METHODS OR FOR SUPERVISION OF CONSTRUCTION.
2. ALL DIMENSIONS ARE TO BE CROSS-CHECKED WITH EXISTING FIELD DIMENSIONS AND APPROVED FABRICATION DRAWINGS FOR THE VARIOUS MATERIALS AND BUILDING COMPONENTS. ALL DISCREPANCIES ARE TO BE BROUGHT TO THE ATTENTION OF THE ENGINEER.

#### SITEWORK

1. THE GENERAL CONTRACTOR IS TO VERIFY ALL CONDITIONS AT THE PROJECT SITE, INCLUDING UNDERGROUND UTILITY LOCATIONS PRIOR TO COMMENCING ANY EXCAVATION ACTIVITIES.

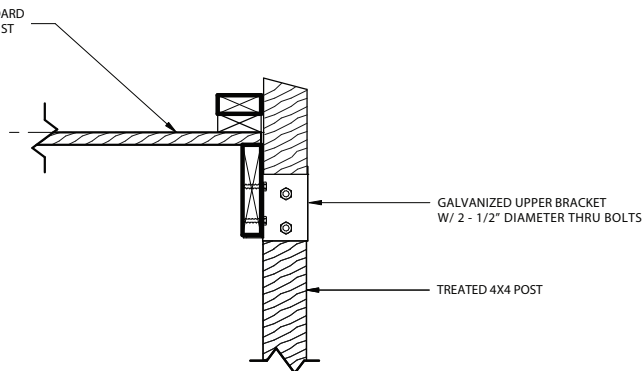
#### FASTENERS:

1. FASTENERS AND CONNECTORS IN CONTACT WITH TREATED LUMBER SHALL BE HOT-DIP GALVANIZED.
2. DECK SCREWS SHALL BE EVERCOTE #6 x 3" DECK MATE SQUARE DRIVE BY PHILLIPS FASTENER PRODUCTS CO.
3. ALL STEEL CONNECTORS SHALL BE HOT-DIP GALVANIZED.

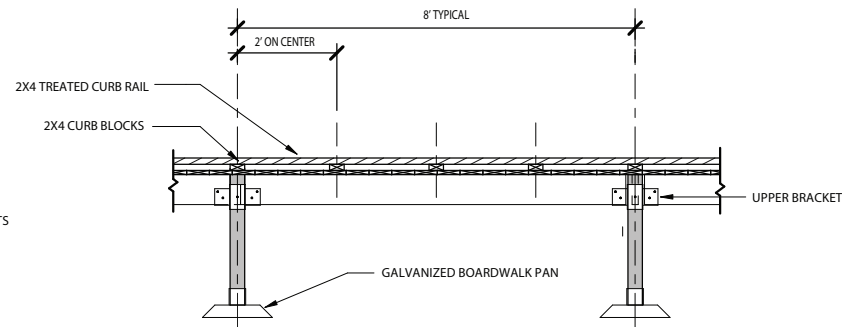
#### WOOD

1. ALL STRUCTURAL DIMENSIONAL LUMBER SHALL COMPLY WITH THE AMERICAN WOOD COUNCIL'S 2015 NATIONAL DESIGN SPECIFICATION FOR WOOD CONSTRUCTION (2015 NDS).
2. ALL WOOD MEMBERS SHALL BE PRESERVATIVE TREATED IN ACCORDANCE WITH THE AMERICAN WOOD COUNCIL REQUIREMENTS FOR PRESERVATIVE TREATED LUMBER.
3. ALL WOOD MEMBERS SHALL HAVE A MAXIMUM MOISTURE CONTENT OF 19% AT THE TIME OF CONSTRUCTION.
4. THE CONTRACTOR SHALL BE RESPONSIBLE FOR ALL TEMPORARY BRACING DURING HANDLING AND ERECTION.
5. THE CONTRACTOR IS RESPONSIBLE FOR THE INSTALLATION OF ALL FINAL BRACING, AS SHOWN ON DRAWINGS.

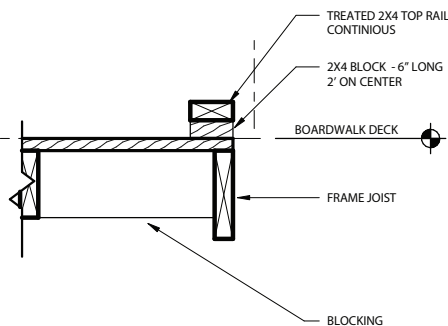
TREATED 5/4 x 6 DECK BOARD  
W/ 2 - #9 SCREWS PER JOIST



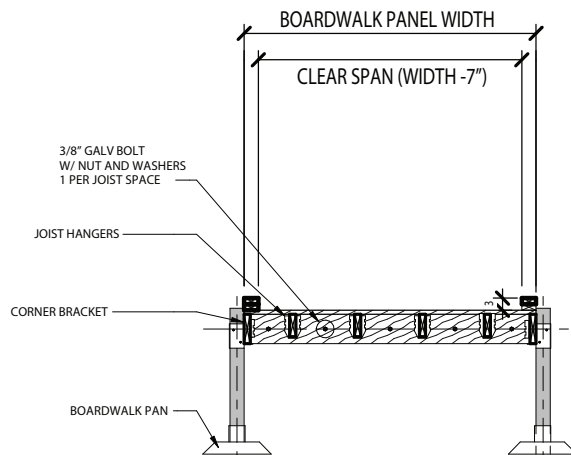
2 POST CONNECTION DETAIL



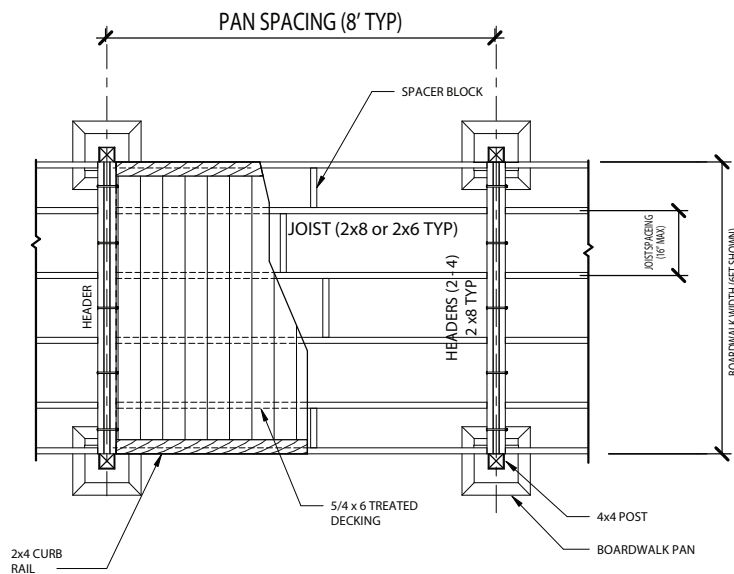
1 SIDE ELEVATION



5 BOARDWALK CURB RAIL



4 BOARDWALK CROSS SECTION



3 BOARDWALK PLAN - TYPICAL PANEL